

Transformative First Principles AI

Quantified Performance Intelligence
Real-Time Optimization

PROPRIETARY INTELLECTUAL PROPERTY
Copyright 2026 Max Abecassis, all rights reserved.
2026-02-01

Overview

Five foundational patent applications claim a domain-agnostic performance evaluation platform.

First principles methodologies:

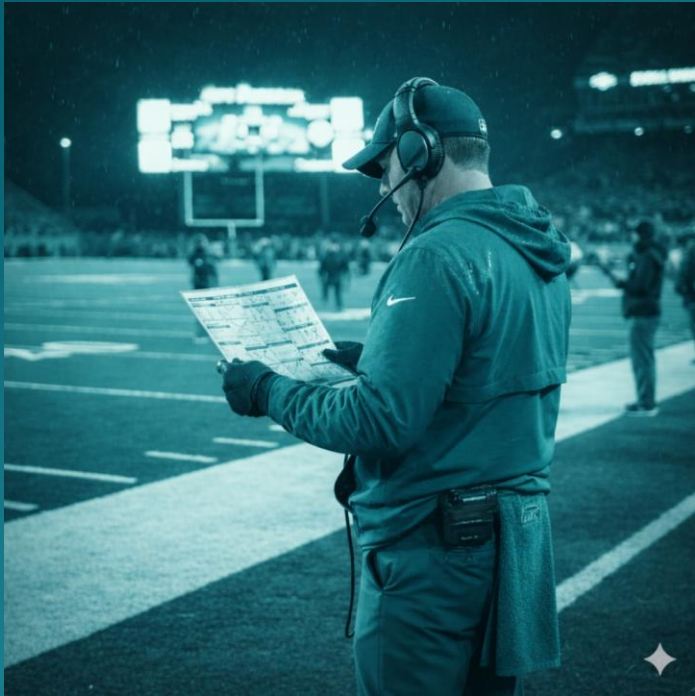
- ▶ Quantified capability assessment.
- ▶ Granular & attribution responsive.
- ▶ Real-time tactical optimization.
- ▶ Cross-domain transferability.

High-value markets:

- ▶ Sports and eSports.
- ▶ Executive assessment.
- ▶ Special operations selection.
- ▶ M&A cultural analysis.

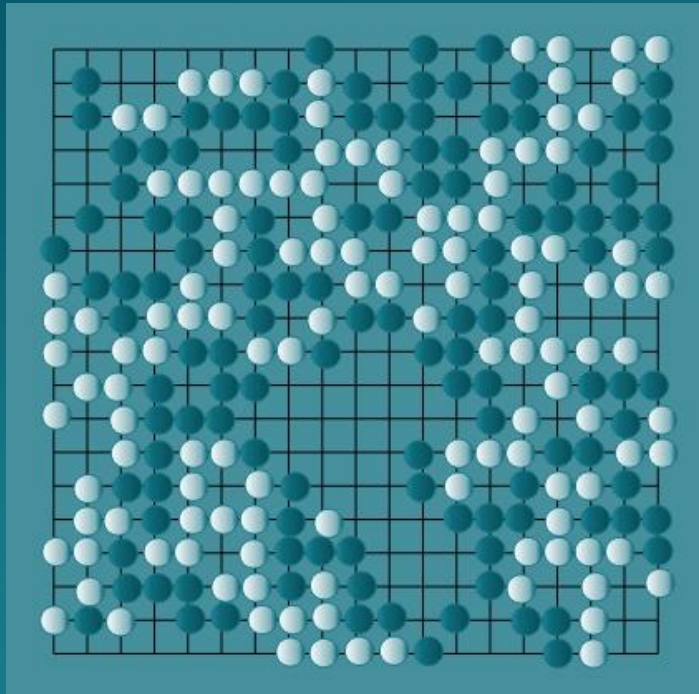
The intellectual property portfolio is available for acquisition.

Fundamental Limitations of Current Performance Evaluation



- ▶ Start with historical outcomes to extract correlations
- ▶ Measure results without execution quality or causation
- ▶ Cannot model real-time capability states or degradation
- ▶ Architectural constraints, not implementation failures

Additive AI Refines • First Principles Transforms



AlphaGo Zero (white) vs AlphaGo Lee (black)

AlphaGo Lee

- ▶ Learned from human games (30 million moves database)
- ▶ Defeated human Go champions

AlphaGo Zero

- ▶ Derived strategy from rules alone
- ▶ Defeated AlphaGo Lee 100-0
- ▶ Used significantly less computation per move
- ▶ Optimized in ways that human intuition failed

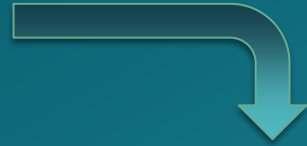
First Principles Defeated 2,500 Years of Human Expertise

First Principles Foundation

Derive What's Required • Quantify What's Demonstrated

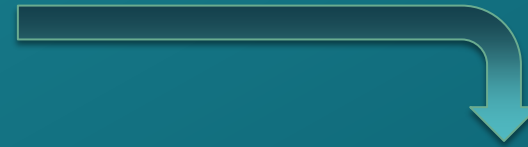
DOMAIN STRUCTURE

- ▶ Rules
- ▶ Objectives
- ▶ Constraints
- ▶ Success Criteria



HUMAN CAPABILITIES

- ▶ Cognitive
- ▶ Psychological
- ▶ Behavioral
- ▶ Physical



OBJECTIVELY VALUABLE CHARACTERISTICS

- ▶ Domain Intelligence
- ▶ Decision Under Pressure
- ▶ Collaborative Capability
- ▶ Risk Calibration
- ▶ Leadership Trusted
- ▶ Performance Attitude
- ▶ Adaptability
- ▶ Physical Capabilities

System Architecture and Processing

Domain-Agnostic Architecture

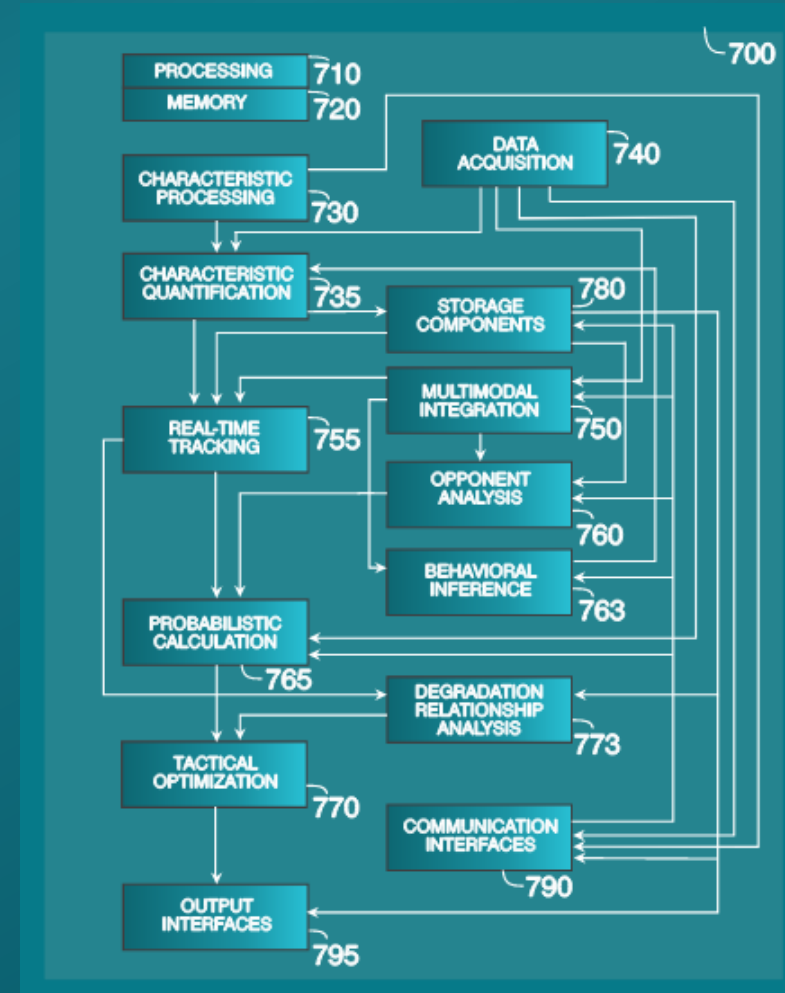
- ▶ Methodologies transfer across all performance evaluation domains
- ▶ Domain-specific data inputs

Data Acquisition Subsystems

- ▶ Visual/Audio, Biometric, Behavioral
- ▶ Performance outcomes
- ▶ Environmental/contextual factors

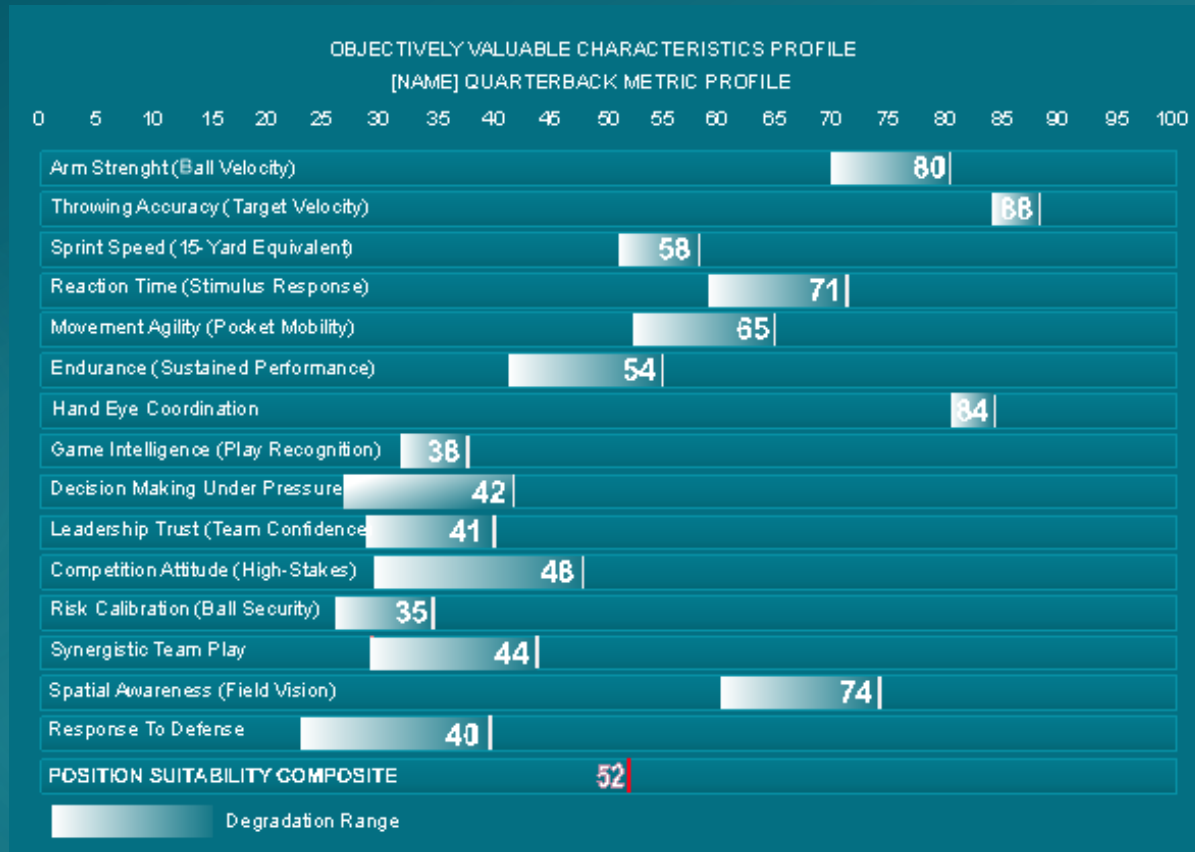
Core Processing Integration

- ▶ Quantified capability assessment
- ▶ Behavioral/degradation tracking
- ▶ Probabilistic outcome optimization



Athletic Competition: A Demanding Example

Metric profiles analogous to SAT/GRE scores



- ▶ Position Suitability Analysis
- ▶ Team Composition Optimization
- ▶ Development Tracking
- ▶ Recruitment Recommendation

Real-Time Game State Optimization



- ▶ Calculates win probability in real-time
- ▶ Integrates capability states and opponent responses
- ▶ Maximizes value through sequential tactics
- ▶ Includes decoy actions to induce degradation before exploitation
- ▶ Booth-based deployment integrated with existing C2P communication systems

Athlete Performance in Alternate Positions/Sports



- ▶ Transferable capability analysis across position and sports
- ▶ Genuine preference assessment vs. social influence
- ▶ Empirical validation through introductory sessions

Broadcast & Media Integration



Real-Time Analytical Overlays

- ▶ Probability calculations
- ▶ Behavioral tells
- ▶ Capability states

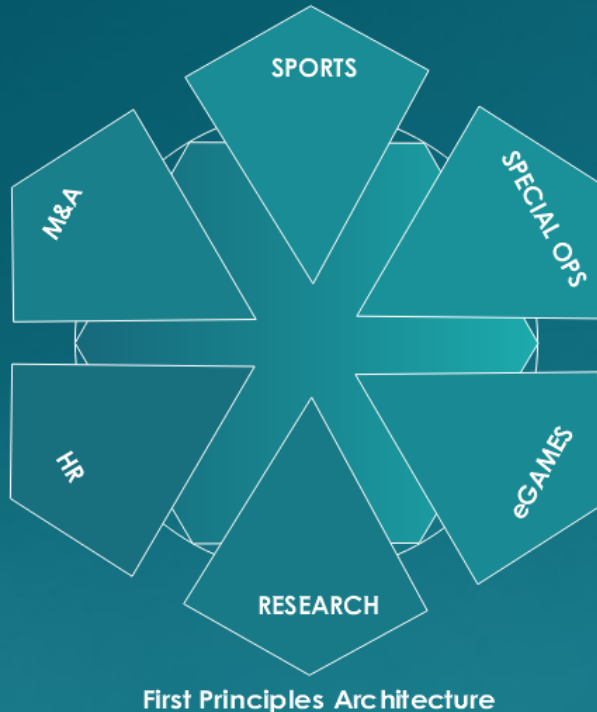
Multi-Platform Delivery

- ▶ Live broadcast
- ▶ Streaming
- ▶ Second-screen apps

Differentiated Viewer Experience

- ▶ Quantified depth beyond subjective commentary

Multiple High-Value Market Segments



Sports & Entertainment

- ▶ Professional Sports Organizations
- ▶ eSports Organizations
- ▶ Elite Sports Academies
- ▶ Sports Analytics Firms
- ▶ Broadcast & Media Integration

Enterprise

- ▶ AI Technology Companies
- ▶ Executive Search & Assessment
- ▶ Management Consulting (M&A)
- ▶ Private Equity / Venture Capital
- ▶ HR & Talent Management

Government & Institutional

- ▶ Defense & Special Operations
- ▶ Diplomatic Services
- ▶ Intelligence Agencies
- ▶ Research Institutions

Personal Services

- ▶ High-Net-Worth Advisory
- ▶ Relationship Compatibility
- ▶ Career Path Analysis

Patent Portfolio and Acquisition Opportunity

Five Patent Applications

- ▶ Coverage across methodologies and markets
- ▶ Strategically drafted for portfolio expansion

Max Abecassis

- ▶ [51 Issues U.S. Patents](#)
- ▶ [Successful DVD portfolio licensing](#)
- ▶ [Demonstrated divisional filing strategy](#)
- ▶ [Multiyear AI development research](#)

Complete IP transfer

- ▶ [Contact: Max Abecassis](#)

